



Early College Advanced Manufacturing Pathway (ECAMP™)

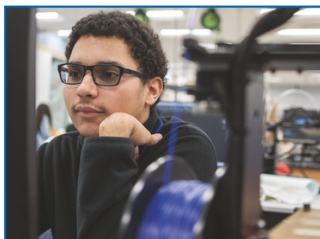
Introducing a New Part-Time Educational Program for Greater Hartford Students!

The Early College Advanced Manufacturing Pathway (ECAMP) at Goodwin University is a Half-Day Magnet School program serving 12th grade students/scholars. Scholars receive free transportation to the Goodwin University Campus where they engage in an afternoon program, taking college-level manufacturing courses and learning from industry partners across the state of Connecticut.

ECAMP scholars gain in-demand skills that can lead to high-paying, rewarding careers in the field of Advanced Manufacturing, including the industries of aerospace, electric vehicles, robotics, medical devices, and many more

High School Information

Scholars that are interested in ECAMP must have 18 high school credits completed by the end of their junior year and be enrolled in a high school that participates in the Regional School Choice Office (RSCO) program and can establish a compatible schedule. Please check with your school counselor to confirm your eligibility. Students are transported from their high school to arrive at Goodwin University by 11:30AM and are dismissed at 2:45PM



Earn up to 21 College Credits!



Early College Advanced Manufacturing Pathway
at Goodwin University

For more information, contact:

David Salonia
ECAMP Career & Technology Teacher
860.966.7737
Dsalonia@goodwinmagnetsystem.org

Early College Advanced Manufacturing Pathway (ECAMP™)

Core Courses Semester 1	High School Credits	College Credits
BMM 100 Introduction to Manufacturing	.5	3
BMM 140 Principles in Manufacturing Math	.5	3
BMM 210 Lean Manufacturing	.5	3
BMM 222 Technical Drafting	.5	3
Semester 2		
BMM 175 CNC Machining	.5	3
BMM 224 Metrology and Calibration	.5	3
BMM 240 Computer Aided Manufacturing	.5	3
Total Credits:	3.5	21

Students will participate in work-based learning opportunities during the first Semester by building their career and workplace skills and working with industry professionals. In the spring semester, students will participate in a work-based experience (job shadow, internship, pre-apprenticeship) two half days per week that is approved by the Connecticut Department of Labor.



Our state-of-the-art manufacturing and technology facility

Opened in February 2020, our 15,000 sq. ft. manufacturing training annex expands upon our existing 60,000 sq. ft. state-of-the-art advanced manufacturing facilities to offer additional capacity and flexible learning opportunities for ECAMP students.

The manufacturing annex is designed and built around a project center hub that includes a variety of related technology stations, allowing work to integrate various technologies. Project center technology stations include:

- Computer numerical control (CNC) machining
- Digital electronics
- Energy technology
- Metal fabrication and welding
- Plastics and composites
- Programming
- Robotics and automation
- Sensor and actuator technology
- Woodworking

Scan to Learn More:



Goodwin University is a nonprofit institution of higher education and is accredited by the New England Commission of Higher Education (NECHE), formerly known as the New England Association of Schools and Colleges (NEASC).



For more information, contact:

David Salonia
 ECAMP Career & Technology Teacher
 860.966.7737
Dsalonia@goodwinmagnetsystem.org



Goodwin
University
Magnet School System

3-Day Introductory

- Blueprint Reading
- Geometric Dimensioning & Tolerancing (GD&T)
- Metrology & Calibration

3-Day Returning

- MasterCAM
- CNC Machining - Milling
- CNC Machining - Lathe

MANUFACTURING INSTITUTE

Summer 2023

Who: CTE/STEM teachers seeking professional development in manufacturing

What: Differentiated PD sessions to prepare educators to teach Goodwin University coursework

When: Introductory - June 21-23, 8:30AM - 2:30PM

Returning - June 28-30, 8:30AM - 2:30PM

Where: 3 Pent Road Annex, East Hartford, Connecticut 06118

Cost: \$495

Lunch will be provided

For more information, please contact Keith Sevigny: ksevigny@goodwinmagnetsystem.org



Advanced Manufacturing Mobile Training Lab



Taking Advanced Manufacturing Education on the Road

Goodwin College's Department of Business, Management, and Advanced Manufacturing prepares career-focused learners with the technical, professional, and interpersonal competencies to meet the needs of today's employers. With this knowledge and ethical mindset, individuals can contribute to the social responsibility and sustainability of organizations within the community.

The **Goodwin Advanced Manufacturing Mobile Training Lab** brings necessary training for skills to:

- *employers* for workforce development
- *high school students*, who can earn college credit in manufacturing
- *middle school students*, inspiring young "makers" to become part of the next generation's workforce
- *the community*, to share information on the awesome opportunities for great careers in manufacturing

Bringing the mobile lab to schools and manufacturing facilities reaches audiences who may not otherwise have access to training and introduces them to a world of career possibilities.

Our Manufacturing in Motion session is 45 to 90 minutes. If you have creative students who like to make things, the MIM program is a great enhancement to your class.

- State-of-the-art mobile classroom
- Accommodates 12-15 students for classes
- Equipped to present any Goodwin College manufacturing course
- Self-powered and climate controlled
- Wi-Fi hotspot
- Easy entrance and accessibility
- Perfect for incumbent worker training; fairs and expos; career exploration events; public relations opportunities

The Advanced Manufacturing Mobile Training Lab brings the college experience to you! For information on booking the lab for your school or facility, please contact:

Guy LaBella
Director of College Relations
glabella@goodwin.edu
860-727-6948

Goodwin College Department of
 Business, Management, and Advanced
 Manufacturing
 One Pent Road
 East Hartford, Connecticut 06118

